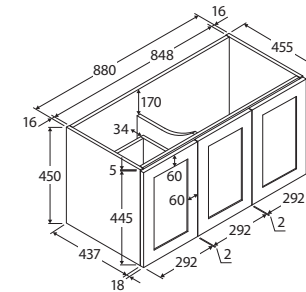


Mila

900MM WALL-HUNG CABINET, LEFT DRAWERS

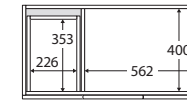
Features

- High quality, satin white exterior with bright white interior
- Soft-close doors and drawers
- Requires handles (not included)
- 16 mm thick backing boards and drawer bases
- FSC certified, eco-friendly E0 board

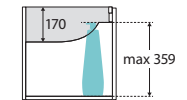


NOTE: HANDLES REQUIRED

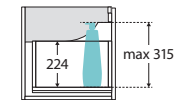
TOP VIEW: SHELF AREA & DRAWER AREA



SIDE VIEW: RECESS & SHELF STORAGE

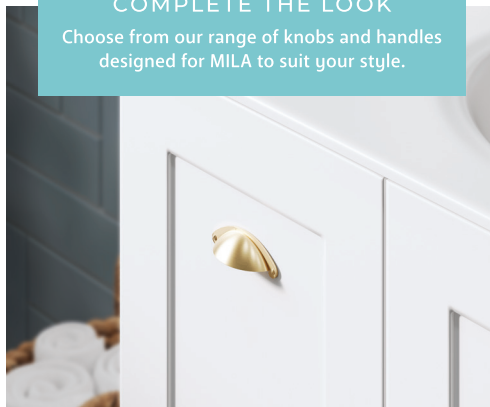


SIDE VIEW: DRAWER STORAGE



COMPLETE THE LOOK

Choose from our range of knobs and handles designed for MILA to suit your style.



Available in



Satin White
with Left Drawers
90ML

Cleaning & Care

- Regularly clean with mild soapy water using a clean, soft cloth.
- Do not use harsh detergents, bleach, abrasive cleaners or cream/wax cleaners. These substances can result in scratches and/or deposit build-ups that will affect the appearance.
- Avoid placing hot objects, such as hair straighteners, on any surface as these will cause discolouration and marking.
- Spills of hair dye, after-shave lotion, nail polish and remover, aerosol spray and other harsh chemicals should be removed immediately to prevent damage and discolouration. Clean immediately with mild soapy water using a clean, soft cloth.

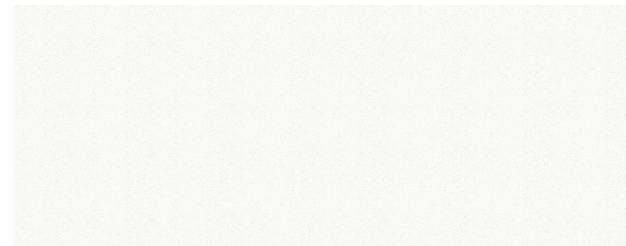
While we aim to ensure specifications are correct at the time of publication, Fienza reserves the right to make modifications without prior notice. Physical colour may vary from image shown. All measurements are shown in millimetres. Always use physical product measurements for mark-ups and roughing-in as the technical drawing may differ from actual product received.

Roman Sand

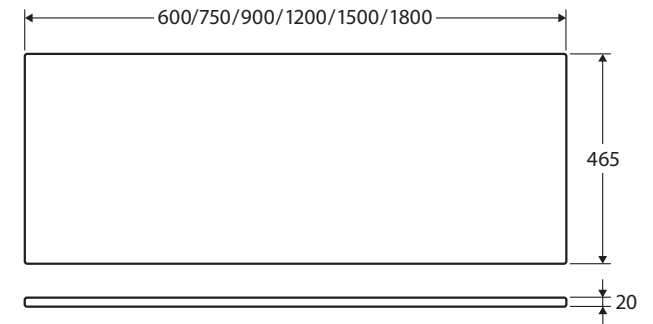
STONE TOP, FULL SLAB

Features

- Light sand with visible fleck; warm tone
- Made from engineered quartz (approximately 90% natural quartz)
- 20 mm thick, 465 mm deep
- Full slab only – tap hole and basin hole cuts may attract additional charges



1200 mm slab shown



Available in



600 mm
502-101



750 mm
502-102



900 mm
502-103



1200 mm
502-104



1500 mm
502-105



1800 mm
502-106

Cleaning & Care

- Wipe with a clean, soft cloth and mild soapy water or non-abrasive bathroom cleaner. Test in an inconspicuous area before cleaning the whole top.
- Avoid placing hot objects, such as hair straighteners, on any surface as these will cause discolouration and marking.
- Spills of hair dye, after-shave lotion, nail polish and remover, aerosol spray and other harsh chemicals should be removed immediately to prevent damage and discolouration. Clean immediately with mild soapy water using a clean, soft cloth.

While we aim to ensure specifications are correct at the time of publication, Fienza reserves the right to make modifications without prior notice. Physical colour may vary from image shown. All measurements are shown in millimetres. Always use physical product measurements for mark-ups and roughing-in as the technical drawing may differ from actual product received.