

fienza[®]

Stone & Timber Top Vanities



VANITY CABINETS • VANITY TOPS • BASINS • VANITY ACCENTS

Why choose a Fienza Vanity?



HIGH QUALITY DESIGN & CONSTRUCTION

Backing boards and drawer bases are 16 mm thick to ensure strength and quality throughout.



SOFT-CLOSE DOORS & DRAWERS

All Fienza cabinets come with soft-close doors, and most cabinets feature soft-close drawers. This ensures smooth and silent operation and long term durability for your vanity.



FULL EXTENSION DRAWER RUNNERS

Allows access to the full depth of storage space in your cabinet. Drawers can be easily removed for cleaning.



LIKE A CUSTOM-MADE VANITY, WITHOUT THE WAIT

Fienza's universal vanities range allows you to choose from a completely interchangeable range of vanity tops, cabinets, and accents to create a custom-look vanity for your bathroom. With all components in stock across 5 distribution centres in Australia, you can enjoy fast dispatch and delivery without the wait often required for custom-made vanities.

INDUSTRY LEADING WARRANTIES

We are committed to producing high quality durable products that will stand the test of time. We are proud to offer industry leading warranties on our products to give you piece of mind.



Cabinets



Stone Tops



Hardwood Tops

*Conditions apply. For details, please visit fienza.com.au/warranty



FSC CERTIFIED

Our universal vanity cabinets are sourced from manufacturers that hold Forest Stewardship Council® Certification (FSC). This ensures that the raw materials used in our products are only sourced from sustainable, managed plantation forests.



ECO-FRIENDLY E0 BOARD

Fienza cabinets are manufactured with highly water-resistant, 2-pac medium density fibreboard (MDF). The majority of our cabinet range is made from E0 grade board. E0 has 50% lower formaldehyde emission than the minimum Australian Standard (E1 board), reducing our impact on the environment and ensuring a safe product that can be installed immediately.

All prices are Recommended Retail Prices (RRP) including GST. Prices are subject to change or correction without notification. Consumers should enquire with a retailer for actual pricing. All information is provided on an E&OE basis (Errors and Omissions Excepted). Always check fienza.com.au for the latest, up-to-date product information. Images shown are representations only. Physical colour may vary from images shown. Visit your nearest retailer to view physical samples before buying. Some images are shown with accessories and/or furniture, which are not included in the price, and such products may not be available within our range.

Your Vanity *Your Way*

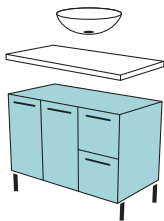
Create your vanity by selecting from our interchangeable range of vanity tops, cabinets, basins and accents.

In this brochure, you will find all the stone & timber top vanity options so it's easy to find the right vanity for you.

YOUR PERFECT ABOVE COUNTER OR SEMI-INSET VANITY IN 4 EASY STEPS:

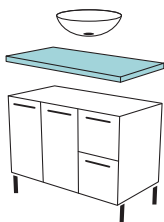
1 *Select Your* CABINET

Over 20 styles available



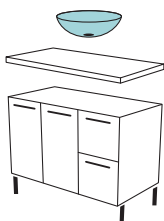
2 *Select Your* VANITY TOP

7 styles available



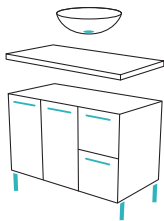
3 *Select Your* BASIN

Over 60 above counter and semi-inset styles available



4 *Select Your* ACCENTS

Multiple styles available

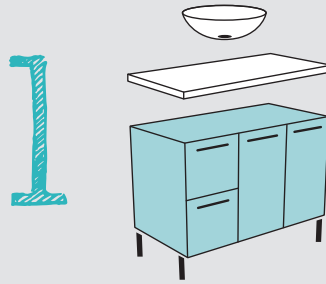


YOUR TIMELESS UNDERMOUNT BASIN VANITY

Find a selection of undermount basin vanity combinations on pages 28-31



Your Vanity *Your Way*



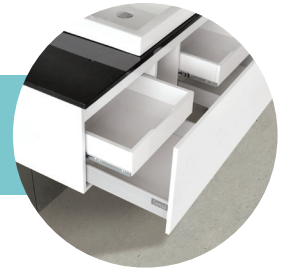
Select Your CABINET

With over 20 different cabinet styles to choose from, there is a universal cabinet to suit your bathroom design. Our universal cabinets are designed to fit any Fienza vanity top, giving you customisation without the fuss.

Choose left-hand or right-hand drawers where available



Door and drawer configurations vary. Find all cabinet specifications and images on our website: fienza.com.au



FINGERPULL Satin White Wall-Hung Cabinet

750 mm Left	\$465	75ZL
750 mm Right	\$465	75ZR
900 mm Left	\$535	90ZL
900 mm Right	\$535	90ZR
1200 mm	\$720	120Z
1500 mm	\$940	150Z



EDGE Scandi Oak Wall-Hung Cabinet

750 mm Left	\$475	75SL
750 mm Right	\$475	75SR
900 mm Left	\$535	90SL
900 mm Right	\$535	90SR
1200 mm	\$720	120S
1500 mm	\$950	150S



EDGE Industrial Wall-Hung Cabinet

750 mm Left	\$475	75XL
750 mm Right	\$475	75XR
900 mm Left	\$535	90XL
900 mm Right	\$535	90XR
1200 mm	\$720	120X
1500 mm	\$950	150X



FINGERPULL Satin Black Wall-Hung Cabinet

750 mm Left	\$575	75ZBL
750 mm Right	\$575	75ZBR
900 mm Left	\$650	90ZBL
900 mm Right	\$650	90ZBR
1200 mm	\$840	120ZB
1500 mm	\$1050	150ZB



FINGERPULL Satin White Cabinet on Kickboard

750 mm Left	\$539	75ZKL
750 mm Right	\$539	75ZKR
900 mm Left	\$609	90ZKL
900 mm Right	\$609	90ZKR
1200 mm	\$810	120ZK
1500 mm	\$1040	150ZK



EDGE Scandi Oak Cabinet on Kickboard

750 mm Left	\$475	75SKL
750 mm Right	\$475	75SKR
900 mm Left	\$535	90SKL
900 mm Right	\$535	90SKR
1200 mm	\$720	120SK
1500 mm	\$950	150SK



EDGE Industrial Cabinet on Kickboard

750 mm Left	\$475	75XKL
750 mm Right	\$475	75XKR
900 mm Left	\$535	90XKL
900 mm Right	\$535	90XKR
1200 mm	\$720	120XK
1500 mm	\$950	150XK



FINGERPULL Satin Black Cabinet on Kickboard

750 mm Left	\$649	75ZBKL
750 mm Right	\$649	75ZBKR
900 mm Left	\$724	90ZBKL
900 mm Right	\$724	90ZBKR
1200 mm	\$930	120ZBK
1500 mm	\$1150	150ZBK

COMPLETE THE LOOK

Find our range of knobs and handles designed for MILA on page 16



Please note: Cabinet prices and codes shown on pages 4-9 do not include a vanity top. Select a stone or timber top on pages 10-11.



MILA Satin White Wall-Hung Cabinet

600 mm	\$505	60M
750 mm Left	\$655	75ML
750 mm Right	\$655	75MR
900 mm Left	\$755	90ML
900 mm Right	\$755	90MR
1200 mm	\$1000	120M
1500 mm	\$1150	150M
1800 mm	\$1300	180M



MANU Gloss White Wall-Hung Cabinet

750 mm	\$640	75H
900 mm	\$720	90H
1200 mm	\$870	120H



UNICAB® Gloss White Cabinet on Legs

750 mm Left	\$475	75NLWL
750 mm Right	\$475	75NLWR
900 mm Left	\$535	90NLWL
900 mm Right	\$535	90NLWR
1200 mm	\$720	120NLW



FINGERPULL Gloss White Wall-Hung Cabinet

750 mm Left	\$475	75FL
750 mm Right	\$475	75FR
900 mm Left	\$535	90FL
900 mm Right	\$535	90FR
1200 mm	\$720	120F
1500 mm	\$940	150F



HAMPTON Satin White Wall-Hung Cabinet

750 mm	\$625	75T-C
900 mm	\$700	90T-C
1200 mm	\$870	120T-C



QUEST Gloss White Wall-Hung Cabinet

750 mm	\$640	75Q
900 mm	\$720	90Q
1200 mm	\$870	120Q



UNICAB® Gloss White Wall-Hung Cabinet

750 mm Left	\$475	75JL
750 mm Right	\$475	75JR
900 mm Left	\$535	90JL
900 mm Right	\$535	90JR
1200 mm	\$720	120J
1500 mm	\$950	150J
1800 mm	\$1100	180J



FINGERPULL Gloss White Cabinet on Kickboard

750 mm Left	\$475	75CL
750 mm Right	\$475	75CR
900 mm Left	\$535	90CL
900 mm Right	\$535	90CR
1200 mm	\$720	120C
1500 mm	\$950	150C



HAMPTON Satin White Cabinet on Kickboard

750 mm	\$685	75TK
900 mm	\$760	90TK
1200 mm	\$930	120TK



QUEST Gloss White Cabinet on Kickboard

750 mm	\$700	75QK
900 mm	\$780	90QK
1200 mm	\$930	120QK



UNICAB® Gloss White Cabinet on Kickboard

750 mm Left	\$475	75NKWL
750 mm Right	\$475	75NKWR
900 mm Left	\$535	90NKWL
900 mm Right	\$535	90NKWR
1200 mm	\$720	120NKW
1500 mm	\$950	150NKW
1800 mm	\$1100	180NKW



ALINA Satin White
Wall-Hung Cabinet

750 mm	\$760	75RW-C
900 mm	\$870	90RW-C
1200 mm	\$1169	120RW-C
1500 mm	\$1450	150RW-C



ALINA Scandi Oak
Wall-Hung Cabinet

750 mm	\$760	75RS-C
900 mm	\$870	90RS-C
1200 mm	\$1169	120RS-C
1500 mm	\$1450	150RS-C



AMATO® Satin White
Wall-Hung Cabinet
with Satin White Panels

750 mm	\$749	75BW
900 mm	\$770	90BW
1200 mm	\$1115	120BW



AMATO® Satin White
Cabinet on Kickboard
with Satin White Panels

750 mm	\$823	75BWK
900 mm	\$844	90BWK
1200 mm	\$1205	120BWK



AMATO® Satin White
Wall-Hung Cabinet
with Scandi Oak Panels

750 mm	\$749	75BWS
900 mm	\$770	90BWS
1200 mm	\$1115	120BWS



AMATO® Satin White
Cabinet on Kickboard
with Scandi Oak Panels

750 mm	\$809	75BWSK
900 mm	\$830	90BWSK
1200 mm	\$1175	120BWSK



AMATO® Satin White
Wall-Hung Cabinet
with Industrial Panels

750 mm	\$749	75BWX
900 mm	\$770	90BWX
1200 mm	\$1115	120BWX



AMATO® Satin White
Cabinet on Kickboard
with Industrial Panels

750 mm	\$809	75BWXK
900 mm	\$830	90BWXK
1200 mm	\$1175	120BWXK



AMATO® Satin White
Wall-Hung Cabinet
with Satin Black Panels

750 mm	\$809	75BWB
900 mm	\$830	90BWB
1200 mm	\$1175	120BWB



AMATO® Satin White
Cabinet on Kickboard
with Satin Black Panels

750 mm	\$883	75BWBK
900 mm	\$904	90BWBK
1200 mm	\$1265	120BWBK



AMATO® Satin White
Wall-Hung Cabinet
with Black Frames

750 mm	\$864	75BWF
900 mm	\$885	90BWF
1200 mm	\$1230	120BWF



AMATO® Satin White
Cabinet on Kickboard
with Black Frames

750 mm	\$938	75BWFK
900 mm	\$959	90BWFK
1200 mm	\$1320	120BWFK



AMATO® Satin White
Wall-Hung Cabinet
with 1 Frame & 1 Towel Rail

750 mm	\$894	75BWFT
900 mm	\$915	90BWFT
1200 mm	\$1260	120BWFT



AMATO® Satin White
Cabinet on Kickboard
with 1 Frame & 1 Towel Rail

750 mm	\$968	75BWFTK
900 mm	\$989	90BWFTK
1200 mm	\$1350	120BWFTK



AMATO® Satin White
Wall-Hung Cabinet
with Black Towel Rails

750 mm	\$924	75BWT
900 mm	\$945	90BWT
1200 mm	\$1290	120BWT



AMATO® Satin White
Cabinet on Kickboard
with Black Towel Rails

750 mm	\$998	75BWTK
900 mm	\$1019	90BWTK
1200 mm	\$1380	120BWTK



AMATO® Scandi Oak
Wall-Hung Cabinet
with Scandi Oak Panels

750 mm	\$749	75BS
900 mm	\$770	90BS
1200 mm	\$1115	120BS



AMATO® Scandi Oak
Cabinet on Kickboard
with Scandi Oak Panels

750 mm	\$809	75BSK
900 mm	\$830	90BSK
1200 mm	\$1175	120BSK



AMATO® Scandi Oak
Wall-Hung Cabinet
with Satin White Panels

750 mm	\$749	75BSW
900 mm	\$770	90BSW
1200 mm	\$1115	120BSW



AMATO® Scandi Oak
Cabinet on Kickboard
with Satin White Panels

750 mm	\$823	75BSWK
900 mm	\$844	90BSWK
1200 mm	\$1205	120BSWK



AMATO® Scandi Oak
Wall-Hung Cabinet
with Satin Black Panels

750 mm	\$809	75BSB
900 mm	\$830	90BSB
1200 mm	\$1175	120BSB



AMATO® Scandi Oak
Cabinet on Kickboard
with Satin Black Panels

750 mm	\$883	75BSBK
900 mm	\$904	90BSBK
1200 mm	\$1265	120BSBK



AMATO® Scandi Oak
Wall-Hung Cabinet
with Black Frames

750 mm	\$864	75BSF
900 mm	\$885	90BSF
1200 mm	\$1230	120BSF



AMATO® Scandi Oak
Cabinet on Kickboard
with Black Frames

750 mm	\$924	75BSFK
900 mm	\$945	90BSFK
1200 mm	\$1290	120BSFK



AMATO® Scandi Oak
Wall-Hung Cabinet
with 1 Frame & 1 Towel Rail

750 mm	\$894	75BSFT
900 mm	\$915	90BSFT
1200 mm	\$1260	120BSFT



AMATO® Scandi Oak
Cabinet on Kickboard
with 1 Frame & 1 Towel Rail

750 mm	\$954	75BSFTK
900 mm	\$975	90BSFTK
1200 mm	\$1320	120BSFTK



FIENZA
UNIVERSAL
CABINETS

feature soft-close drawers
and doors as standard

(Excludes selected
UNICAB® models)



AMATO® Scandi Oak Wall-Hung Cabinet with Black Towel Rails

750 mm	\$924	75BST
900 mm	\$945	90BST
1200 mm	\$1290	120BST



AMATO® Scandi Oak Cabinet on Kickboard with Black Towel Rails

750 mm	\$984	75BSTK
900 mm	\$1005	90BSTK
1200 mm	\$1350	120BSTK



AMATO® Industrial Wall-Hung Cabinet with Industrial Panels

750 mm	\$749	75BX
900 mm	\$770	90BX
1200 mm	\$1115	120BX



AMATO® Industrial Cabinet on Kickboard with Industrial Panels

750 mm	\$809	75BXK
900 mm	\$830	90BXK
1200 mm	\$1175	120BXK



AMATO® Industrial Wall-Hung Cabinet with Satin White Panels

750 mm	\$749	75BXW
900 mm	\$770	90BXW
1200 mm	\$1115	120BXW



AMATO® Industrial Cabinet on Kickboard with Satin White Panels

750 mm	\$823	75BXWK
900 mm	\$844	90BXWK
1200 mm	\$1205	120BXWK



AMATO® Industrial Wall-Hung Cabinet with Satin Black Panels

750 mm	\$809	75BXB
900 mm	\$830	90BXB
1200 mm	\$1175	120BXB



AMATO® Industrial Cabinet on Kickboard with Satin Black Panels

750 mm	\$883	75BXBK
900 mm	\$904	90BXBK
1200 mm	\$1265	120BXBK



AMATO® Industrial Wall-Hung Cabinet with Black Frames

750 mm	\$864	75BXF
900 mm	\$885	90BXF
1200 mm	\$1230	120BXF



AMATO® Industrial Cabinet on Kickboard with Black Frames

750 mm	\$924	75BXFK
900 mm	\$945	90BXFK
1200 mm	\$1290	120BXFK



AMATO® Industrial Wall-Hung Cabinet with 1 Frame & 1 Towel Rail

750 mm	\$894	75BXFT
900 mm	\$915	90BXFT
1200 mm	\$1260	120BXFT



AMATO® Industrial Cabinet on Kickboard with 1 Frame & 1 Towel Rail

750 mm	\$954	75BXFTK
900 mm	\$975	90BXFTK
1200 mm	\$1320	120BXFTK



AMATO® Industrial Wall-Hung Cabinet with Black Towel Rails

750 mm	\$924	75BXT
900 mm	\$945	90BXT
1200 mm	\$1290	120BXT



AMATO® Industrial Cabinet on Kickboard Wall-Hung Cabinet

750 mm	\$984	75BXTK
900 mm	\$1005	90BXTK
1200 mm	\$1350	120BXTK



AMATO® Satin Black Wall-Hung Cabinet with Satin Black Panels

750 mm	\$829	75BB
900 mm	\$850	90BB
1200 mm	\$1195	120BB



AMATO® Satin Black Cabinet on Kickboard with Satin Black Panels

750 mm	\$903	75BBK
900 mm	\$924	90BBK
1200 mm	\$1285	120BBK



AMATO® Satin Black
Wall-Hung Cabinet
with Satin White Panels

750 mm	\$769	75BBW
900 mm	\$790	90BBW
1200 mm	\$1135	120BBW



AMATO® Satin Black
Cabinet on Kickboard
with Satin White Panels

750 mm	\$843	75BBWK
900 mm	\$864	90BBWK
1200 mm	\$1225	120BBWK



AMATO® Satin Black
Wall-Hung Cabinet
with Black Frames

750 mm	\$884	75BBF
900 mm	\$905	90BBF
1200 mm	\$1250	120BBF



AMATO® Satin Black
Cabinet on Kickboard
with Black Frames

750 mm	\$958	75BBFK
900 mm	\$979	90BBFK
1200 mm	\$1340	120BBFK



AMATO® Satin Black
Wall-Hung Cabinet
with 1 Frame & 1 Towel Rail

750 mm	\$914	75BBFT
900 mm	\$935	90BBFT
1200 mm	\$1280	120BBFT



AMATO® Satin Black
Cabinet on Kickboard
with 1 Frame & 1 Towel Rail

750 mm	\$988	75BBFTK
900 mm	\$1009	90BBFTK
1200 mm	\$1370	120BBFTK



AMATO® Satin Black
Wall-Hung Cabinet
with Black Towel Rails

750 mm	\$944	75BBT
900 mm	\$965	90BBT
1200 mm	\$1310	120BBT



AMATO® Satin Black
Cabinet on Kickboard
with Black Towel Rails

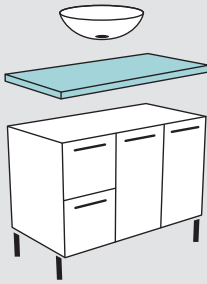
750 mm	\$1018	75BBTK
900 mm	\$1039	90BBTK
1200 mm	\$1400	120BBTK



SEEKING A DIFFERENT
STYLE FOR YOUR
AMATO VANITY?

Simply order individual AMATO® cabinet
components. For more information,
see our website: fienza.com.au

2



Select Your VANITY TOP

Our carefully crafted vanity tops are designed to fit onto any Fienza universal vanity cabinet. Choose from a range of styles, colours and materials.

PLEASE NOTE
 These pages refer to above counter and semi-inset basin vanities only.
 For undermount basin and stone top options, see pages 28-31.

Stone & Hardwood Top Cutting

Additional charges may apply for cutting stone or hardwood tops. Please view the table opposite for applicable charges. Terms and conditions apply for non-Fienza semi-inset basins, see below.

***Non-Fienza Semi-Inset Basins:** A suitable cutting template must be supplied at the time of order. It is strongly recommended that you send the physical basin purchased for installation to your nearest Fienza distribution centre. In the event that a suitable cutting template cannot be supplied, you may be asked to send the physical basin to us for template creation. Fienza is not liable for inaccurate templates supplied to us.

Type of Cut	When purchased with a Fienza Basin	Non-Fienza Basins*
Basin Waste Hole	Included	\$50
Semi-Inset Basin Hole	Included with item codes on page 15	\$140
1 Tap Hole	Included	\$50
3 Tap Holes	\$50	\$50

CALACATTA MARBLE

Add opulence to your bathroom with the stunning, luxurious style of Calacatta marble-effect stone from Fienza.

- Marble-effect, engineered quartz stone top
- 20 mm thick, 465 mm deep

- 750 mm \$495 • 508-102
- 900 mm \$585 • 508-103
- 1200 mm \$770 • 508-104
- 1500 mm \$1000 • 508-105
- 1800 mm \$1200 • 508-106

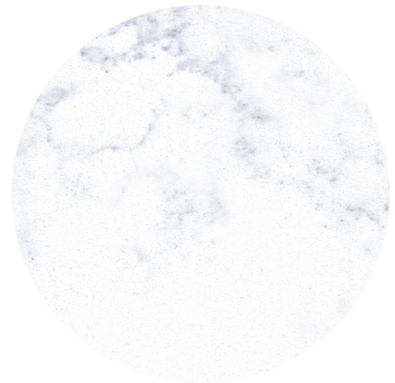


BIANCO MARBLE

Bianco Marble stone tops are crafted with a light marble effect to add a touch of elegance to your bathroom.

- Marble-effect, engineered quartz stone top
- 20 mm thick, 465 mm deep

- 750 mm \$305 • 504-102
- 900 mm \$340 • 504-103
- 1200 mm \$380 • 504-104
- 1500 mm \$581 • 504-105
- 1800 mm \$651 • 504-106



CRYSTAL PURE

Crystal pure stone adds a clean, minimalist look with a crystal white finish.

- Crystal white, engineered quartz stone top
- 20 mm thick, 465 mm deep

- 750 mm \$305 • 503-102
- 900 mm \$340 • 503-103
- 1200 mm \$380 • 503-104
- 1500 mm \$581 • 503-105
- 1800 mm \$651 • 503-106



AUSTRALIAN HARDWOOD

These carefully crafted hardwood tops are made from natural, 100% recycled Australian timber, making each piece unique.

- Natural, 100% recycled timber
- 40 mm thick, 465 mm deep

750 mm \$750 • 700-101

900 mm \$850 • 700-102

1200 mm \$1050 • 700-103

1500 mm \$1400 • 700-104

1800 mm \$1700 • 700-105

Please note: Fienza timber vanity tops cannot be paired with undermount basin styles.



ROMAN SAND

Roman Sand stone tops feature a light sand, patterned look that complement a wide variety of bathroom designs and styles.

- Light sand, engineered quartz stone top
- 20 mm thick, 465 mm deep

750 mm \$305 • 502-102

900 mm \$340 • 502-103

1200 mm \$380 • 502-104

1500 mm \$581 • 502-105

1800 mm \$651 • 502-106



DOVE GREY

Dove Grey stone has a concrete-look, making it an excellent centrepiece for a rustic or industrial inspired bathroom.

- Dove grey, concrete-look, engineered quartz stone top
- 20 mm thick, 465 mm deep

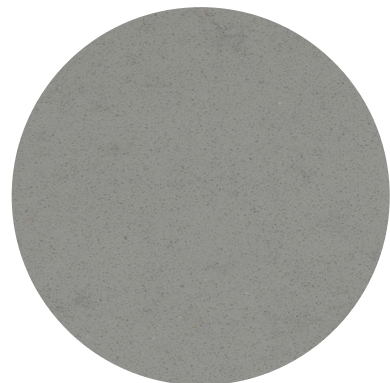
750 mm \$305 • 505-102

900 mm \$340 • 505-103

1200 mm \$380 • 505-104

1500 mm \$581 • 505-105

1800 mm \$651 • 505-106



BLACK SPARKLE

The Black Sparkle stone top complements a minimalist bathroom design with a touch of sparkle.

- Sparkling black, engineered quartz stone top
- 20 mm thick, 465 mm deep

750 mm \$305 • 501-102

900 mm \$340 • 501-103

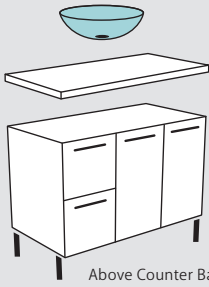
1200 mm \$380 • 501-104

1500 mm \$551 • 501-105

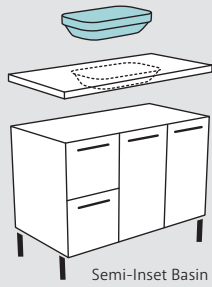
1800 mm \$651 • 501-106



3



Above Counter Basin



Semi-Inset Basin

Select Your BASIN

With over 60 above counter and semi-inset basins to choose from, you are destined to find a style to suit your vanity.



Above Counter Basins

Above counter basins make a bold statement in the design of your bathroom and can feature as a beautiful centre-piece for your vanity.

CERAMIC ABOVE COUNTER BASINS



REBA Gloss White
\$199 • RB3134



REBA Matte White
\$329 • RB3134W



REBA Matte Pink
\$329 • RB3134P



REBA Matte Green
\$329 • RB3134G



REBA Matte Blue
\$329 • RB3134BLUE



REBA Matte Light Grey
\$329 • RB3134LG



REBA Matte Dark Grey
\$329 • RB3134DG



REBA Matte Black
\$329 • RB3134B



REBA MINI Gloss White
\$199 • RB3280



RAK-FEELING Round
Alpine White
\$320 • 606000W



PAOLA Gloss White
\$199 • RB3078



LULU Gloss White
\$199 • TR4037



ELEANOR Round Gloss White
\$249 • RB465



ELEANOR Oval Gloss White
\$249 • RB464



ELEANOR Arch Gloss White
\$249 • RB463



ELEANOR Rectangular
Gloss White
\$249 • RB467



ELEANOR Round Matte White
\$420 • RB465MW



ELEANOR Oval Matte White
\$420 • RB464MW



ELEANOR Arch Matte White
\$420 • RB463MW



FORMA Gloss White
\$249 • RB480



KOKO® 370 Gloss White
\$199 • RB184



KOKO® 465 Gloss White
\$199 • RB185



KOKO® 465 Matte White
\$480 • RB185MW



KOKO® 465 Matte Black
\$480 • RB185B



PETRA Gloss White
No Tap Hole
\$199 • RB196



CHICA 405 Gloss White
1 tap hole \$199 • RB2201
(Not suitable for three tap holes)



CHICA 500 Gloss White
1 tap hole \$199 • RB2202
(Not suitable for three tap holes)



RAK-FEELING Oval
Alpine White
\$320 • 606100W



LINCOLN 350 Gloss White
\$199 • RB04



EVIE Gloss White
\$199 • TR4322



CHLOE Gloss White
\$199 • RB2245



KEETO Gloss White
\$249 • RB814



LUCIANA® Gloss White
\$249 • RB2178



LUCIANA® Matte Black
\$430 • RB2178B



RAK-FEELING Rectangular
Alpine White
\$320 • 606200W

CERAMIC ABOVE COUNTER BASINS



HELEN JUNIOR Gloss White
1 tap hole \$199 • TR4148
3 tap holes \$249 • TR4148-3



PETRA Gloss White
1 tap hole \$249 • RB2173
3 tap holes \$299 • RB2173-3



PETRA Matte Black
1 tap hole \$460 • RB2173B
3 tap holes \$510 • RB2173B-3



PETRA MINI Gloss White
1 tap hole \$249 • RB2177
3 tap holes \$299 • RB2177-3



MODENA BABY Gloss White
1 tap hole \$165 • TR4549
(Not suitable for three tap holes)



MODENA Gloss White
1 tap hole \$285 • RB07N
3 tap holes \$335 • RB07N-3



WILLOW Gloss White
1 tap hole \$249 • RB7033
3 tap holes \$299 • RB7033-3



COMO Gloss White
1 tap hole \$199 • 7078W
(Not suitable for three tap holes)

CAST STONE ABOVE COUNTER BASINS



CLASSIQUE 420 Matte White
\$399 • CSB02



CLASSIQUE 600 Matte White
\$449 • CSB03



BAHAMA Matte White
\$399 • CSB01



LEXY Matte White
\$399 • CSB038



CLASSIQUE 420 Matte Black
\$599 • CSB02-MB



CLASSIQUE 600 Matte Black
\$649 • CSB03-MB



BAHAMA Matte Black
\$599 • CSB01-MB



NERO Matte White
\$499 • CSB63



RONDO 400 Matte White
1 tap hole \$399 • CSB09
3 tap holes \$449 • CSB09-3



RONDO 600 Matte White
1 tap hole \$469 • CSB010
3 tap holes \$519 • CSB010-3

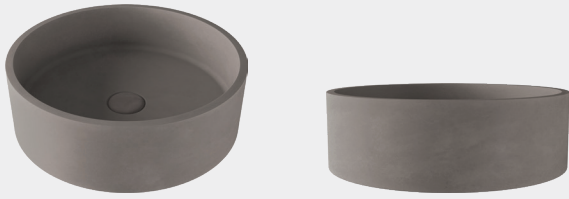


ANTONIA Matte White
\$499 • CSB088



BAHAMA MKII Matte White
\$499 • CSB61

CONCRETE ABOVE COUNTER BASIN



JADA Warm Grey
\$399 • RB199



Semi-Inset Basins

Semi-inset basins provide a balance between above counter and undermount basin styles, giving more space while retaining an above counter look.

All prices shown below include the semi-inset hole cut for the vanity top



REBA Ceramic Gloss White
\$339 • RB3134D-SEMI
(10 o'clock or 2 o'clock tap hole only)



REBA Ceramic Gloss White
1 tap hole \$360 • RB4066-SEMI



RAK RESORT Ceramic Gloss White
\$389 • 605500W-SEMI



PETRA Ceramic Gloss White
1 tap hole
\$389 • RB4063-SEMI



PETRA MINI Ceramic Gloss White
1 tap hole \$339 • RB2601-SEMI



PARISA Ceramic Gloss White
No tap hole \$389 • RB5033-0-SEMI
1 tap hole \$389 • RB5033-1-SEMI



ALISON Ceramic Gloss White
1 tap hole \$389 • TR4975-SEMI



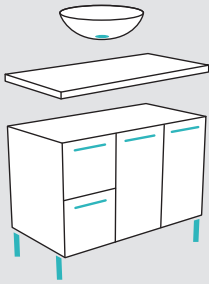
SARAH Ceramic Gloss White
For Stone Tops
(Centre basin-hole and 12 o'clock tap hole only)
\$199 • RB4071
For all other Stone Top cuts and all Hardwood cuts
\$339 • RB4071-SEMI



KADOS Cast Stone Matte White
For Stone Tops
(Centre basin-hole and 12 o'clock tap hole only)
\$420 • CSB05
For all other Stone Top cuts and all Hardwood cuts
\$560 • CSB05-SEMI



4



Select Your ACCENTS

Complete the look with a range of accents to suit your style.

KAYA® POINT KNOBS

NEW



Chrome
\$9 each
HANDLEPCH



Gun Metal
\$10 each
HANDLEPGM



Urban Brass
\$10 each
HANDLEPUB



Brushed Nickel
\$10 each
HANDLEPBN



Matte Black
\$9 each
HANDLEPMB

MILA SHAKER KNOBS

NEW



Chrome
\$10 each
HANDLEKCH



Brushed Nickel
\$11 each
HANDLEKBN



Matte Black
\$10 each
HANDLEKMB



Urban Brass
\$11 each
HANDLEKUB

HAMPTON HANDLES

NEW



Chrome
\$11 each
HANDLEHCH



Brushed Nickel
\$12 each
HANDLEHBN



Matte Black
\$11 each
HANDLEHMB



Urban Brass
\$12 each
HANDLEHUB

ALUMINIUM PULL-CHANNEL SETS

For QUEST cabinets only
(aluminium pull-channels included)



750 mm • \$50
Gloss White RAIL75W
Matte Black RAIL75MB

900 mm • \$59
Gloss White RAIL90W
Matte Black RAIL90MB

1200 mm • \$65
Gloss White RAIL120W
Matte Black RAIL120MB



Gloss White



Matte Black

ADJUSTABLE LEGS

For use in place of a kickboard

Chrome 120 mm • \$12.50 each
SQUARE LEG120SQ
ROUND LEG120RO



Chrome 200 mm • \$12.50 each
SQUARE LEG200SQ
ROUND LEG200RO

SQUARE Chrome

Chrome 250 mm • \$12.50 each
SQUARE LEG250SQ
ROUND LEG250RO



Matte Black 120 mm • \$15 each
ROUND LEG120BLKRO

ROUND Chrome

Matte Black 200 mm • \$15 each
ROUND LEG200BLKRO



ROUND Matte Black

UNICAB® HANDLES

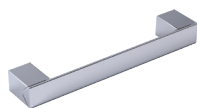
Fit all UNICAB® sizes (AMATO, EDGE, FINGERPULL, HAMPTON, MANU and QUEST do not require handles)



BOW Chrome
(included with cabinet,
valued at \$7.50 each)
HANDLEG160



BOW Matte Black
\$7.50 each
HANDLEGB160



SQUARE Chrome
\$7.50 each
HANDLEC160



EMPIRE Chrome
\$15 each
HANDLEW160



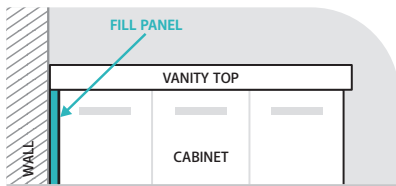
RAIL Chrome
\$7.50 each
HANDLEA160



DELGADO Chrome
\$7.50 each
HANDLED160

VANITY FILL PANEL Size: 50W x 880H x 18D mm (trim to size)

When your vanity is installed beside a wall, this panel fills the gap between the protruding basin-top and cabinet.



Gloss White
\$22 • F-BF18



Satin White
\$20 • BF18MW



Scandi Oak
\$20 • BF18S



Industrial
\$20 • BF18X



Satin Black
\$20 • BF18MB

DOME CAP POP-UP WASTES

(32 mm waste)

Dome cap wastes are available in three materials and a range of colours.



Ceramic Cap
Gloss White \$60
No Overflow WAS81
With Overflow WAS82



Ceramic Cap
Matte White \$60
No Overflow WAS59MW
With Overflow WAS58MW



Ceramic Cap
Matte Blue \$60
No Overflow WAS59BLUE
With Overflow WAS58BLUE



Ceramic Cap
Matte Green \$60
No Overflow WAS59GR
With Overflow WAS58GR



Ceramic Cap
Matte Pink \$60
No Overflow WAS59P
With Overflow WAS58P



Ceramic Cap
Matte Light Grey \$60
No Overflow WAS59LG
With Overflow WAS58LG



Ceramic Cap
Matte Dark Grey \$60
No Overflow WAS59DG
With Overflow WAS58DG



Ceramic Cap
Matte Black \$60
No Overflow WAS59MB
With Overflow WAS58MB



Cast Stone Cap
Matte White \$65
No Overflow WAS59W
With Overflow WAS58W



Cast Stone Cap
Matte Black \$65
No Overflow WAS59B
With Overflow WAS58B



Brass Cap
Chrome \$30
No Overflow WAS59
With Overflow WAS58

UNIVERSAL POP-UP/PULL-OUT WASTES

(32/40 mm waste)

Universal wastes are for use with or without an overflow. The top section is removable for easy cleaning.



Chrome
\$49 • WAS72



Brushed Nickel
\$80 • WAS72BN



Gun Metal
\$80 • WAS72GM



Matte Black
\$80 • WAS72MB



Urban Brass
\$80 • WAS72UB



Warm Grey Concrete
\$100 • WAS72CC

ROUND OVERFLOW RINGS

For above counter and semi-inset basins

For Undermount Overflow Rings add \$2 to the price of a round overflow ring and '2' to the end of the item code, e.g. OVERFLOWCHR2



Chrome
\$10 • OVERFLOWCHR

Brushed Nickel
\$16 • OVERFLOWBN



Gun Metal
\$16 • OVERFLOWGM



Matte Black
\$10 • OVERFLOWBLK

Urban Brass
\$16 • OVERFLOWUB



RECTANGULAR OVERFLOW RINGS



White \$10 • OVERFLOWSQW
Black \$10 • OVERFLOWSQB



Your Vanity
Your Way

UNIVERSAL
VANITY COMBO

\$1834

Includes:

AMATO® Satin White 1200 mm Wall-Hung Cabinet with Scandi Oak Panels
\$1115 • 120BWS

Crystal Pure 1200 mm Stone Top
\$380 • 503-104

SARAH Gloss White Ceramic Semi-Inset Basin
(Includes basin hole cut)
\$339 • RB4071-SEMI

(Tapware and waste not included)

MIRROR CABINET

\$785

Includes:

1200 mm Scandi Oak Mirror Cabinet with Display Shelf
\$585 • PSC1200SS

1200 mm Satin White Display Shelf Insert
\$200 • IN120MW



UNIVERSAL
VANITY COMBO

\$2084

Includes:

AMATO® Scandi Oak 1200 mm Cabinet with Satin White Panels and Kickboard
\$1205 • 120BSWK

Crystal Pure 1200 mm Stone Top
\$380 • 503-104

NERO Matte White Cast Stone Above Counter Basin
\$499 • CSB63

(Tapware and waste not included)

MIRROR CABINET

\$535

1200 mm Satin White Mirror Cabinet with Side Panels
\$535 • PSC1200MW

Your Vanity
Your Way

UNIVERSAL
VANITY COMBO

\$1934

Includes:

AMATO® Satin Black 1200 mm Cabinet with Satin White Panels and Kickboard
\$1225 • 120BBWK

Crystal Pure 1200 mm Stone Top
\$380 • 503-104

REBA Matte Black Ceramic Above Counter Basin
\$329 • RB3134B

(Tapware and waste not included)

MIRROR CABINET

\$880

Includes:

1200 mm Satin White Mirror Cabinet with Display Shelf
\$640 • PSC1200SMW

1200 mm Satin Black Display Shelf Insert
\$240 • IN120B



UNIVERSAL
VANITY COMBO

\$1985

Includes:

AMATO® Industrial 1200 mm Wall-Hung Cabinet with Satin Black Panels
\$1175 • 120BXB

Black Sparkle 1200 mm Stone Top
\$380 • 501-104

LUCIANA® Matte Black Ceramic Above Counter Basin
\$430 • RB2178B

(Tapware and waste not included)

MIRROR CABINET

\$890

Includes:

1200 mm Satin Black Mirror Cabinet with Display Shelf
\$690 • PSC1200SB

1200 mm Industrial Display Shelf Insert
\$200 • IN120X



NEW

Your Vanity
Your Way

UNIVERSAL
VANITY COMBO

\$2804

Includes:

MILA Satin White 1800 mm
Wall-Hung Cabinet
\$1300 • 180M

5 x MILA Shaker Knobs
Brushed Nickel
\$55 (\$11 each) • HANDLEKBN

Bianco Marble 1800 mm Stone Top
\$651 • 504-106

2 x CLASSIQUE 420 Matte White
Cast Stone Above Counter Basins
\$798 (\$399 each) • CSB02

(Tapware and waste not included)



NEW

UNIVERSAL
VANITY COMBO

\$2145

Includes:

MILA Satin White 1200 mm
Wall-Hung Cabinet
\$1000 • 120M

4 x KAYA® Point Knobs
Matte Black
\$36 (\$9 each) • HANDLEPMB

Calacatta Marble 1200 mm Stone Top
\$770 • 508-104

SARAH Gloss White Ceramic
Semi-Inset Basin
(Includes basin hole cut)
\$339 • RB4071-SEMI

(Tapware and waste not included)

Your Vanity
Your Way

UNIVERSAL
VANITY COMBO

\$1499

Includes:

HAMPTON Satin White 1200 mm
Wall-Hung Cabinet
\$870 • 120T-C

Bianco Marble 1200 mm Stone Top
\$380 • 504-104

ELEANOR Rectangular Gloss White
Ceramic Above Counter Basin
\$249 • RB467

(Tapware and waste not included)

UNIVERSAL
VANITY COMBO

\$1889

Includes:

HAMPTON Satin White 1200 mm
Wall-Hung Cabinet
\$870 • 120T-C

Calacatta Marble 1200 mm Stone Top
\$770 • 508-104

ELEANOR Oval Gloss White Ceramic
Above Counter Basin
\$249 • RB464

(Tapware and waste not included)





NEW

Your Vanity
Your Way

UNIVERSAL
VANITY COMBO

\$2709

Includes:

ALINA Satin White 1500 mm
Wall-Hung Cabinet
\$1450 • 150RW-C

Crystal Pure 1500 mm Stone Top
\$581 • 503-105

2 x REBA Gloss White Ceramic
Semi-Inset Basins
(Includes basin hole cut)
\$678 (\$339 each) • RB3134D-SEMI

(Tapware and waste not included)



NEW

UNIVERSAL
VANITY COMBO

\$1748

Includes:

ALINA Scandi Oak 1200 mm
Wall-Hung Cabinet
\$1169 • 120RS-C

Crystal Pure 1200 mm Stone Top
\$380 • 503-104

KOKO Gloss White Ceramic
Above Counter Basin
\$199 • RB185

(Tapware and waste not included)

Your Vanity
Your Way

UNIVERSAL
VANITY COMBO

\$1109

Includes:

FINGERPULL Satin White 750 mm
Wall-Hung Cabinet with Left Drawers
\$465 • 75ZL

Dove Grey 750 mm Stone Top
\$305 • 505-102

PETRA MINI Gloss White Ceramic
Semi-Inset Basin
(Includes basin hole cut)
\$339 • RB2601-SEMI

(Tapware and waste not included)

UNIVERSAL
VANITY COMBO

\$1419

Includes:

FINGERPULL Satin Black 1200 mm
Wall-Hung Cabinet
\$840 • 120ZB

Crystal Pure 1200 mm Stone Top
\$380 • 503-104

PETRA No Tap Hole Gloss White Ceramic
Above Counter Basin
\$199 • RB196

(Tapware and waste not included)





Your Vanity
Your Way

UNIVERSAL
VANITY COMBO

\$1299

Includes:

EDGE Scandi Oak 1200 mm
Wall-Hung Cabinet
\$720 • 120S

Crystal Pure 1200 mm Stone Top
\$380 • 503-104

REBA Gloss White Ceramic
Above Counter Basin
\$199 • RB3134

(Tapware and waste not included)



UNIVERSAL
VANITY COMBO

\$1429

Includes:

EDGE Industrial 1200 mm
Wall-Hung Cabinet
\$720 • 120X

Roman Sand 1200 mm Stone Top
\$380 • 502-104

REBA Matte Dark Grey Ceramic
Above Counter Basin
\$329 • RB3134DG

(Tapware and waste not included)

Your Vanity
Your Way

UNIVERSAL
VANITY COMBO

\$1580

Includes:

FINGERPULL Satin White 1200 mm
Wall-Hung Cabinet
\$720 • 120Z

Black Sparkle 1200 mm Stone Top
\$380 • 501-104

KOKO® Matte White Above Counter Basin
\$480 • RB185MW

(Tapware and waste not included)

UNIVERSAL
VANITY COMBO

\$1869

Includes:

FINGERPULL Satin Black 1200 mm
Wall-Hung Cabinet
\$840 • 120ZB

Crystal Pure 1200 mm Stone Top
\$380 • 503-104

CLASSIQUE 600 Matte Black
Cast Stone Above Counter Basin
\$649 • CSB03-MB

(Tapware and waste not included)





Your Vanity
Your Way

UNIVERSAL
VANITY COMBO

\$1349

Includes:

EDGE Industrial 1200 mm
Wall-Hung Cabinet
\$720 • 120X

Crystal Pure 1200 mm Stone Top
\$380 • 503-104

LUCIANA® Gloss White Ceramic
Above Counter Basin
\$249 • RB2178

(Tapware and waste not included)



UNIVERSAL
VANITY COMBO

\$2400

Includes:

HAMPTON Satin White 1200 mm
Wall-Hung Cabinet
\$870 • 120T-C

Australian Hardwood 1200 mm Top
\$1050 • 700-103

KOKO® Matte White Above Counter Basin
\$480 • RB185MW

(Tapware and waste not included)

Your Vanity
Your Way

UNIVERSAL
VANITY COMBO

\$2539

Includes:

FINGERPULL Satin Black 1200 mm
Wall-Hung Cabinet
\$840 • 120ZB

Australian Hardwood 1200 mm Top
\$1050 • 700-103

CLASSIQUE 600 Matte Black
Cast Stone Above Counter Basin
\$649 • CSB03-MB

(Tapware and waste not included)



UNIVERSAL
VANITY COMBO

\$1344

Includes:

UNICAB® Gloss White 1200 mm Cabinet
on Kickboard
\$720 • 120NKW

6 x BOW Matte Black Handles
\$45 (\$7.50 each) • HANDLEGB160

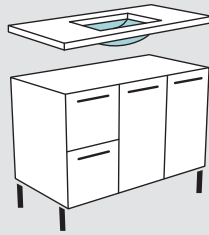
Black Sparkle 1200 mm Stone Top
\$380 • 501-104

COMO Gloss White Ceramic
Above Counter Basin
\$199 • 7078W

(Tapware and waste not included)



Your Vanity *Your Way*



Undermount BASIN VANITIES

Undermount basins come pre-joined to a stone vanity top, so all you have to do is select your favourite style.

Sarah

Sarah is an elegant, soft curved undermount basin that provides a clean and minimalist look with ample counter space.



SARAH Undermount
Ceramic Gloss White
\$199 • TR4070

Koko

If you prefer a wider, rectangular basin, upgrade to the Koko undermount basin.



KOKO Undermount
Ceramic Gloss White
\$249 • RB561

CALACATTA MARBLE

Add opulence to your bathroom with the luxurious style of our Calacatta marble-effect stone.

- Marble-effect, engineered quartz
- 20 mm thick, 465 mm deep



ROMAN SAND

Roman Sand stone tops feature a light sand, patterned look that complement a wide variety of bathroom designs and styles.

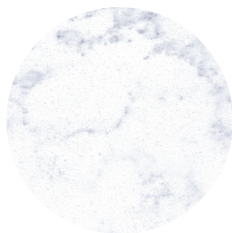
- Light sand, engineered quartz
- 20 mm thick, 465 mm deep



BIANCO MARBLE

Bianco Marble stone tops are crafted with a light marble effect to add a touch of elegance to your bathroom.

- Marble-effect, engineered quartz
- 20 mm thick, 465 mm deep



DOVE GREY

Dove Grey stone has a concrete look, making it an excellent centrepiece for a rustic or industrial inspired bathroom.

- Dove grey, , engineered quartz
- 20 mm thick, 465 mm deep



CRYSTAL PURE

Crystal pure stone adds a clean, minimalist look with a crystal white finish.

- Crystal white, engineered quartz
- 20 mm thick, 465 mm deep



BLACK SPARKLE

The Black Sparkle stone top complements a minimalist bathroom design with a touch of sparkle.

- Sparkling black, engineered quartz
- 20 mm thick, 465 mm deep



Please note: Fienza timber vanity tops cannot be paired with undermount basin styles.

Your Vanity
Your Way

UNIVERSAL
VANITY COMBO

\$1449

Includes:

HAMPTON Satin White 1200 mm
Wall-Hung Vanity Cabinet with a
Bianco Marble 1200 mm Stone Top and
SARAH Gloss White Undermount Basin
SI120T

(Mixer, waste and overflow ring not included)

NO TAP HOLE
DESIGN
AVAILABLE

Ask in store for details

Ask in store to
view the full range
of combinations or
visit our website:
fienza.com.au

UNIVERSAL
VANITY COMBO

\$1549

Includes:

MANU Satin White 1200 mm
Wall-Hung Cabinet with a
Bianco Marble 1200 mm Stone Top and
KOKO Gloss White Undermount Basin
(Including 3 Tap Holes)

KI120H-3

(Mixer, waste and overflow ring not included)





NO TAP HOLE
DESIGN
AVAILABLE
Ask in store for details

Your Vanity
Your Way

UNIVERSAL
VANITY COMBO

\$1889

Includes:

HAMPTON Satin White 1200 mm
Wall-Hung Cabinet with a
Calacatta Marble 1200 mm Stone Top
SARAH Gloss White Undermount Basin
(Including 3 Tap Holes)

SM120T-3

(Mixer, waste and overflow cap not included)



UNIVERSAL
VANITY COMBO

\$1299

Includes:

FINGERPULL Satin White 1200 mm
Wall-Hung Cabinet with a
Dove Grey 1200 mm Stone Top and
SARAH Gloss White Undermount Basin

SD120Z

(Mixer, waste and overflow ring not included)



Your Vanity
Your Way

UNIVERSAL
VANITY COMBO

\$1349

Includes:

EDGE Industrial 1200 mm
Wall-Hung Vanity Cabinet with a
Black Sparkle 1200 mm Stone Top and
KOKO Gloss White Undermount Basin

KB120X

(Mixer, waste and overflow ring not included)



Ask in store to
view the full range
of combinations or
visit our website:
fienza.com.au

UNIVERSAL
VANITY COMBO

\$1349

Includes:

EDGE Scandi Oak 1200 mm
Wall-Hung Cabinet with a
Crystal Pure 1200 mm Stone Top and
KOKO Gloss White Undermount Basin

KC120S

(Mixer, waste and overflow ring not included)



fienza®

Beautiful, quality
Bathware

At Fienza our core passion is to excite you with new, innovative and cutting-edge designer products.

Our commitment to international quality standards has ensured that Fienza continues to be the preferred choice for beautiful bathrooms and kitchens all over Australia.

Fienza® products are available through all leading bathroom, kitchen and plumbing retailers.

For more information, contact us or visit our website:

P (07) 3490 6700

E info@fienza.com.au

www.fienza.com.au

Retailer/Distributor: